

**REQUEST FOR PROPOSALS
CITY OF HINESVILLE
SPEED TABLES ON LOCAL CITY STREETS**

The City of Hinesville will accept proposals from suppliers of the following:

- Asphalt Speed Table installations to include installation of asphalt speed table, pavement markings, and signage in the following seven locations.
 - Two locations on Windhaven Drive
 - Two locations on Miles Crossings in Griffin Park Subdivision
 - Two locations on Paul Caswell Drive
 - One location on Madison Drive

Aerial Site Location Plans for each of the sites are attached
City's MWBE Policy is attached.

MWBE Goal for the project is 10%, 7% MBE and 3% for WBE.

List of certified MWBE Contractors for the project will be supplied at the pre-bid meeting.

All Proposers are required to attend a mandatory "VIRTUAL" pre-bid meeting via ZOOM on November 30, 2020, at 2:00 p.m.

By reference- Agreement shall be EJCDC (D-520) format between City and Contractor.

By reference- Supplemental Conditions attached

EJCDC D-700 General Conditions of the Contract between Owner and Contractor shall apply.

Construction details on asphalt Speed Table, pavement markings and required signage.

Each proposal shall include a completed proposal form.

Each proposal will be reviewed and scored based on the following criteria.

- **Minority and Women-Owned Business Enterprise Policy**
 - The bidder will describe how they plan to meet the M/WBE goals that have been established for the project. It will be determined if the bidder has met MBE and WBE goals individually and collectively, thereby satisfying the MWBE goal. If the bidder does not meet the MWBE goal, they must meet Good Faith Efforts with the proper documentation required under the M/WBE policy.
 - Scoring values:
 - 10 points if MWBE Goals are met.

- 5 points if Good Faith effort is met.
 - 0 points if Goal nor Good Faith effort are met
- **Contract Price Provisions**
 - The bidder's proposed price will be weighed heavily based on the budget for the project.
 - Scoring Values
 - 85 points for Low Bid
 - 80 points Second Low Bid within 5% of the low bid
 - 75 points Second low bid more than 5% of the low bid
 - 70 points for Third Low Bid
 - Each subsequent bidder with a higher value will receive a score 5 points lower than the previous
- **Local Preference**
 - The bidder will be awarded points based on meeting the criteria of being deemed local by certain criteria such as:
 - Business being located within the geographic boundaries in the City of Hinesville or Liberty County
 - Business where at least 51 percent of the owners of the business are residents of the City of Hinesville or Liberty County, but the business is located outside of the City or County.
 - Business where at least 51 percent of the employees of the business are residents of the City of Hinesville or Liberty County, but the business is located outside of the City or County.
 - Scoring Value:
 - 5 points for local proposer

All proposals will be reviewed and scored by the review committee. If the committee desires, it may develop a short list of the best proposals and interview the short listed proposers. If the scoring criteria results in a tie, the tied proposers will be interviewed and a recommendation made to the City Council by the selection committee. Once the selection process is complete, no further interviews or presentations will be entertained.

Contact on this proposal shall be limited to the following and should be in writing:

Technical inquiries or questions related to the submittal or scoring of the proposal:

Paul Simonton
P.C. Simonton & Associates, Inc.
309 N. Main Street
Hinesville, GA 31313
Email: psimonton@pcsimonton.com
Voice: 912-368-5212

MWBE inquiries should be directed to:

Delisa (Espada) Clift
Strategic Biz Solutions
425 West Oglethorpe Hwy
Hinesville, GA. 31313
Email: delisa@strategicbusiness.comcastbiz.net
Voice: 912-368-3471

All inquiries not included in one of the above should be directed to:

Kenneth Howard, Interim City Manager
City of Hinesville
115 East M.L. King Jr. Dr.
Hinesville, GA. 31313
Email: khoward@cityofhinesville.org
Voice: 912-876-3564

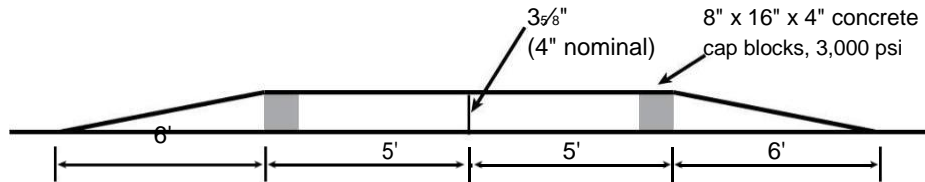
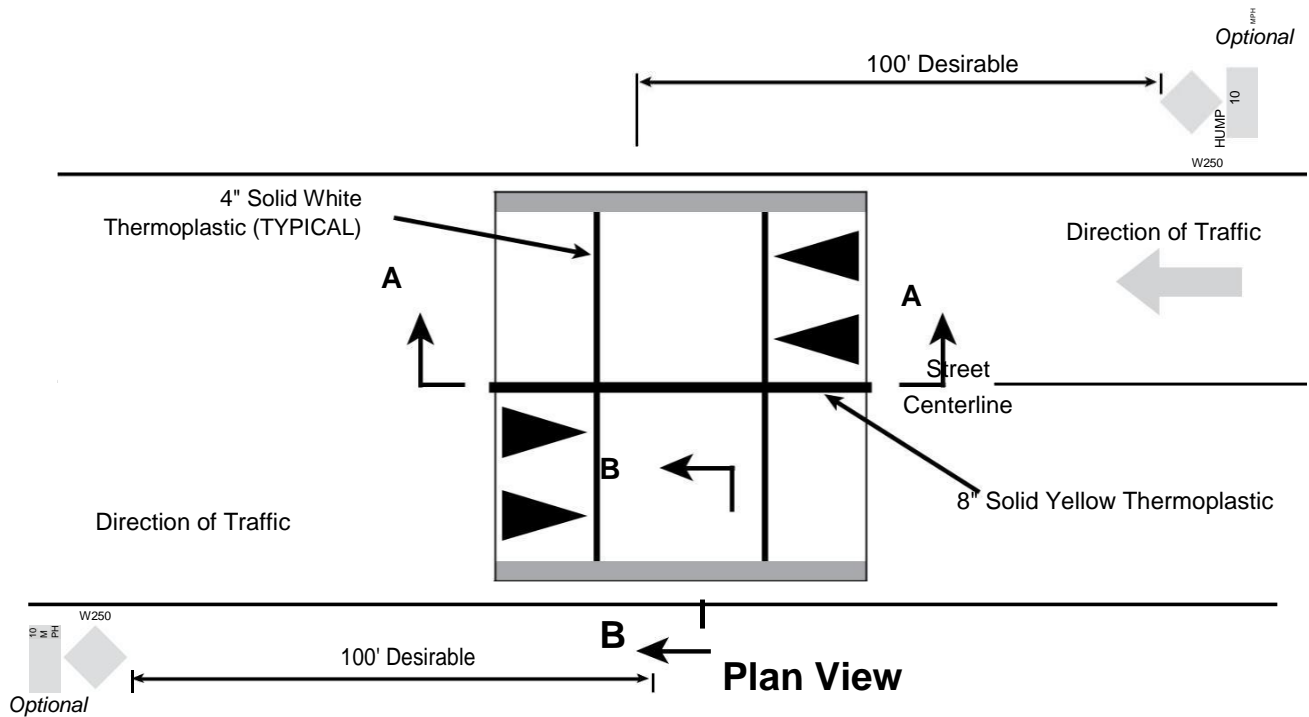
The proposer should anticipate the following schedule:

- RFP Advertising Nov. 11, 2020 to Dec., 9, 2020
- Mandatory Pre-bid Meeting (virtual) Nov. 30, 2020 2:00 PM
- Proposals Due Dec.17, 2020 (City Hall)
- Award by City Council Jan.7, 2020
- Notice of Award Jan 12, 2021
- Preconstruction Meeting Feb. 3, 2020
- Notice to Proceed Feb. 8,2021
- Complete Project & Operational April 8, 2021

Sealed competitive proposals will be received by the City of Hinesville located at 115 East M.L. King Jr. Drive, Hinesville, GA 31313 on December 17, 2020 until 2:00 p.m. local time.

The City reserves the right to reject any and all proposals.

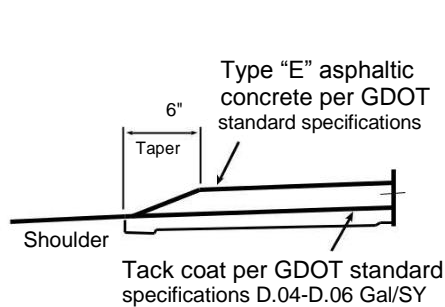
Appendix A – Speed Table Construction



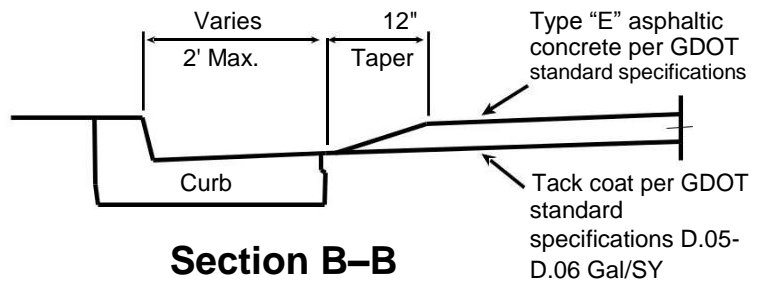
NOTES

1. Speed humps may only be placed on streets with grades less than 8%
2. Speed humps shall be installed on "two-pass" streets only to ensure residential traffic only will traverse them

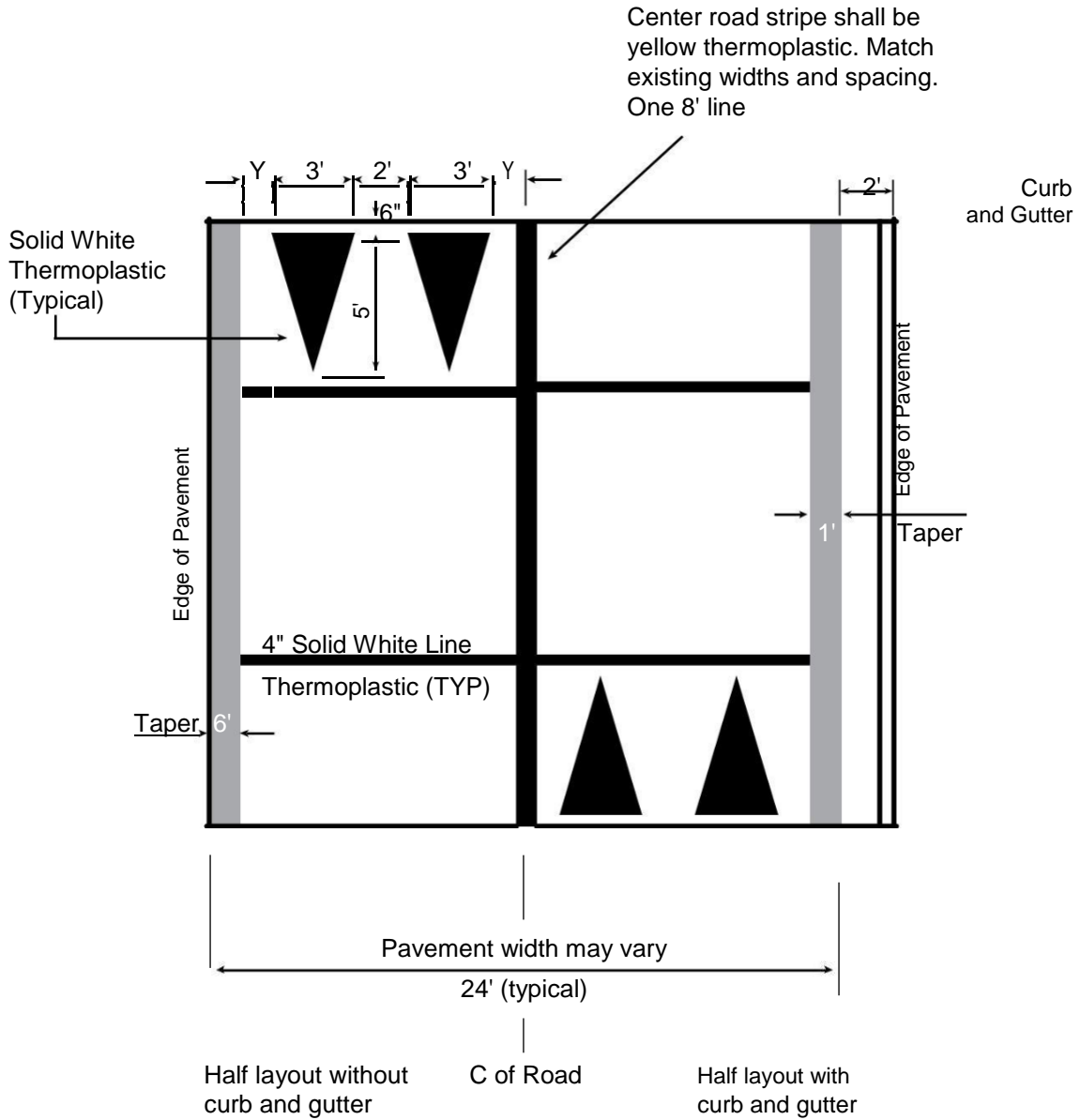
Taper shall be 6" for road widths of 22" or less



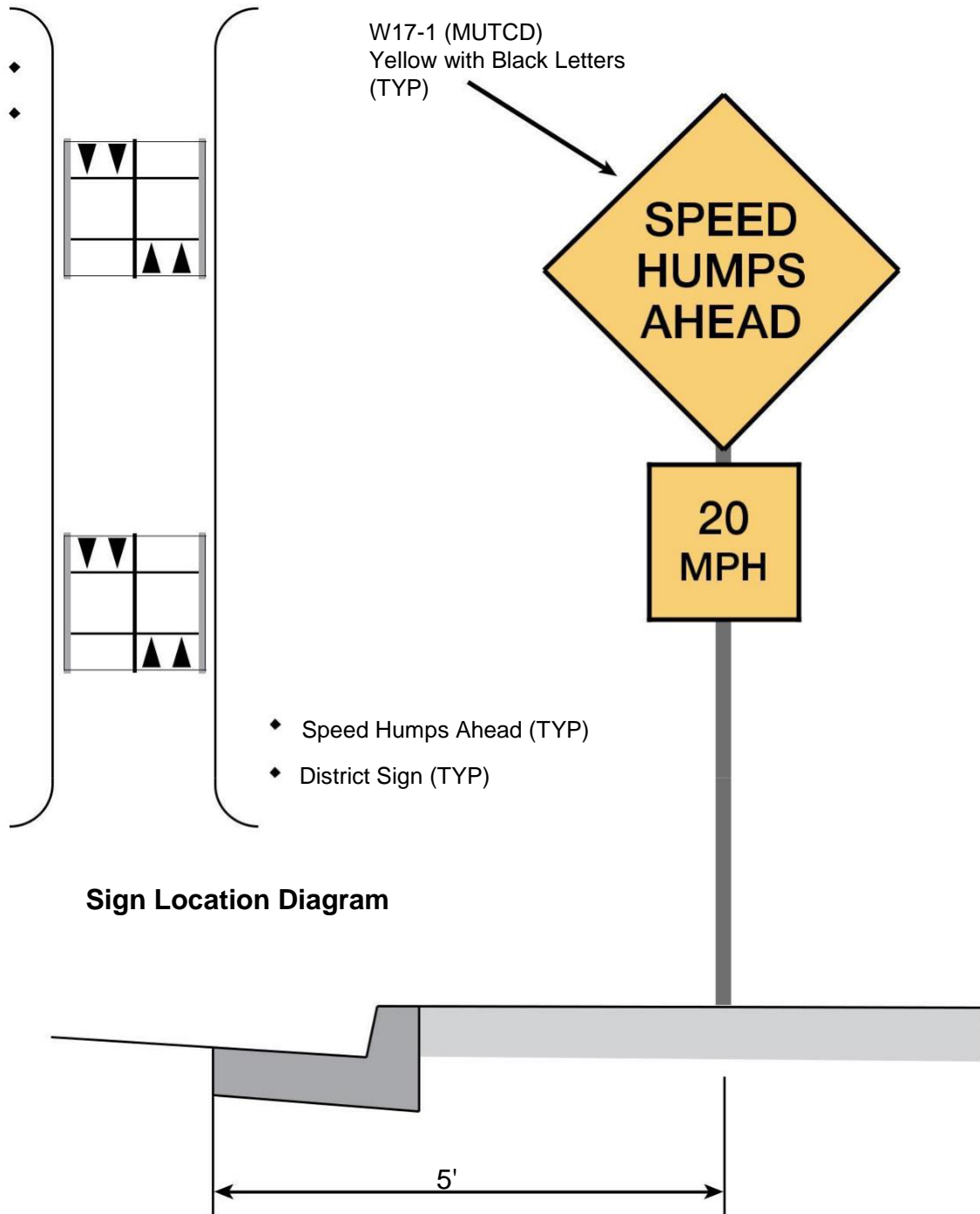
Shoulder detail for streets without curbs



Appendix B – Speed Table Pavement Marking Details



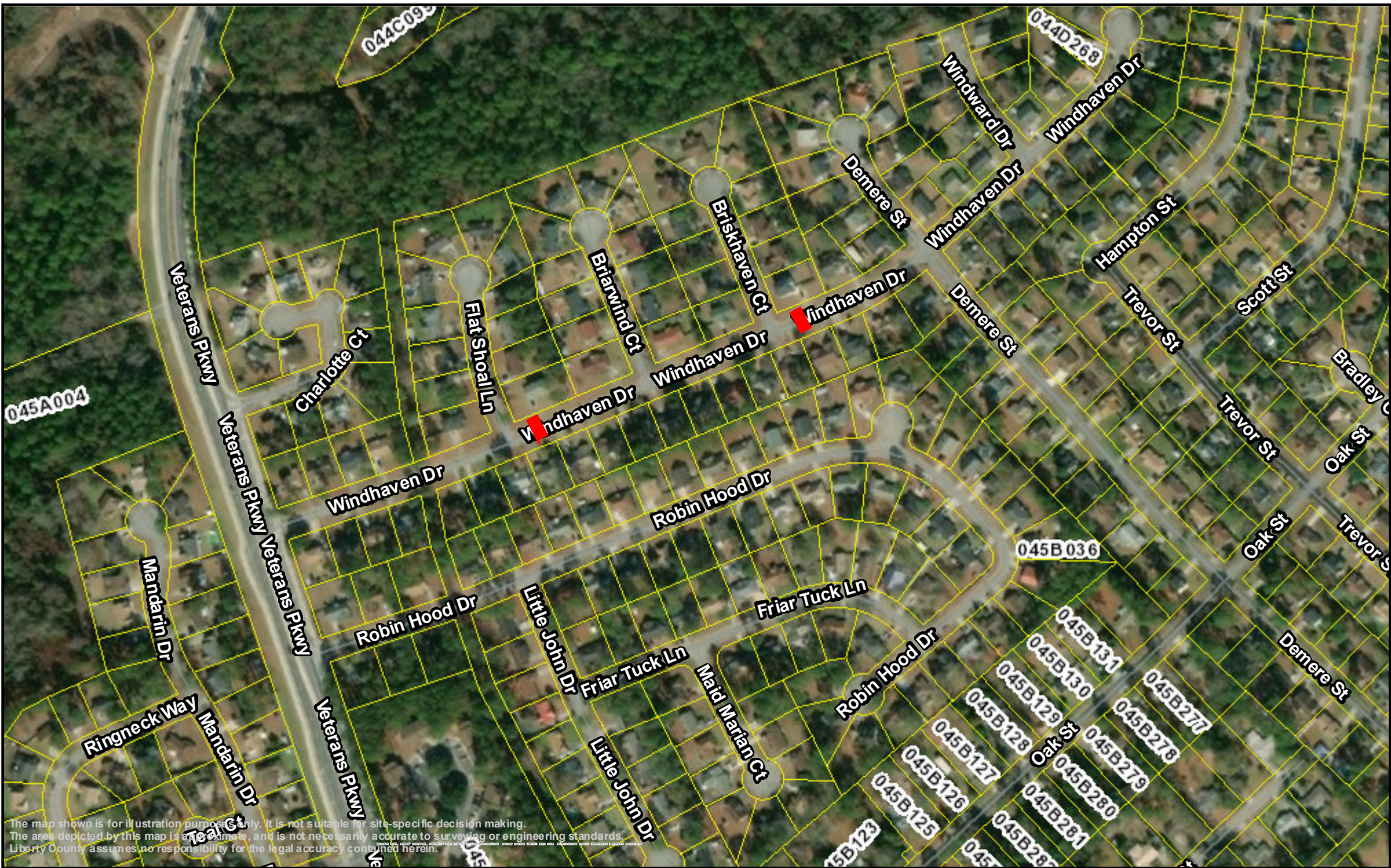
Appendix C – Sign Location Diagram



Appendix D – Speed Hump Photo







Deann Drive, Hinesville, Georgia



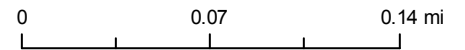
The map shown is for illustration purposes only. It is not suitable for site-specific decision making. The area depicted by this map is an estimate, and is not necessarily accurate to surveying or engineering standards. Liberty County assumes no responsibility for the legal accuracy contained herein.

Liberty County PRISYM 2.0

- | | |
|--|---|
| Lines | Carto Line |
|  Speed table |  Land Hook |
|  Roads | |
|  Parcels | |



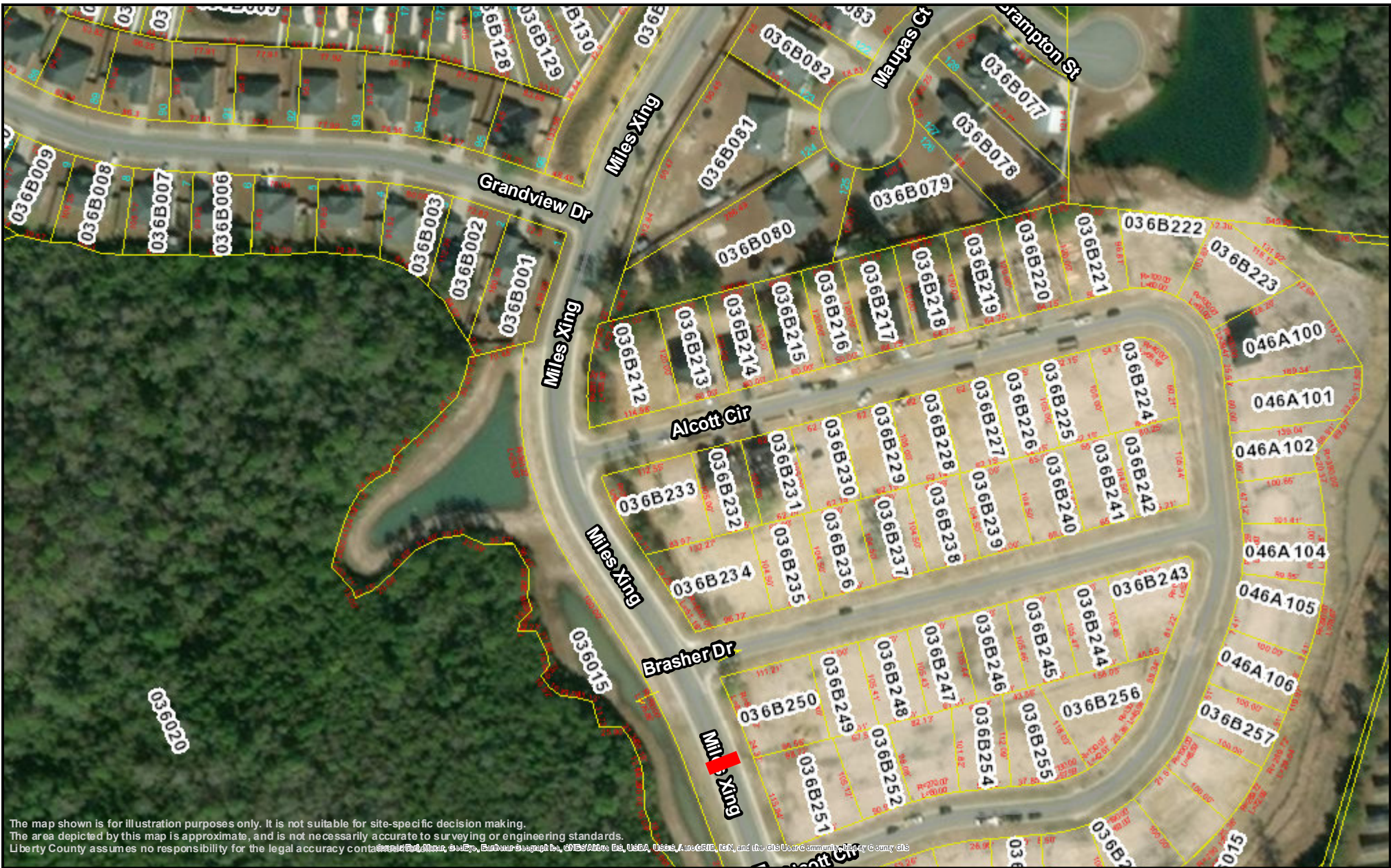
Liberty County
Assessors' Office
100 Main Street, Suite 1550
Hinesville, Georgia 31313
Phone: (912) 876-3568



1 inch = 376 feet






Printed on 9/30/2020
<http://www.libertycountyga.com>



The map shown is for illustration purposes only. It is not suitable for site-specific decision making. The area depicted by this map is approximate, and is not necessarily accurate to surveying or engineering standards. Liberty County assumes no responsibility for the legal accuracy contained herein. Source: Esri, DeLorme, GeoEye, Earthstar Geographics, CNES/Airbus DS, USDA, AeroGRID, IGN, and the GIS User Community. Property © Liberty County, Georgia.

Liberty County PRISYM 2.0

-  Roads
-  Parcels
- Carto Line**
-  Land Hook



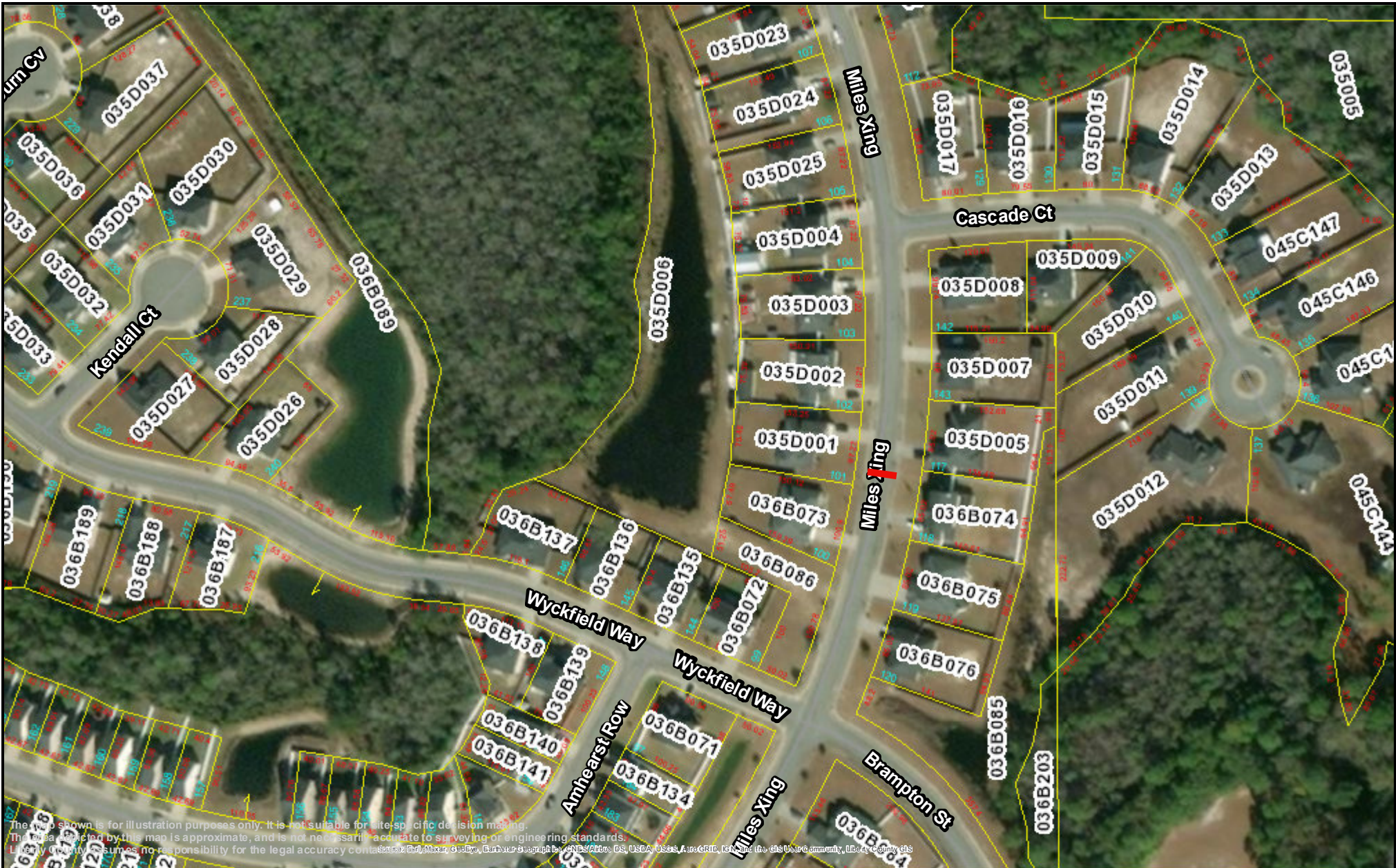
Liberty County
Assessors' Office
100 Main Street, Suite 1550
Hinesville, Georgia 31313
Phone: (912) 876-3568

0 0.035 0.07 mi

1 inch = 188 feet



Printed on 10/15/2020
<http://www.libertycountyga.com>



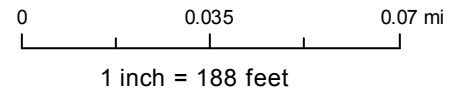
The map shown is for illustration purposes only. It is not suitable for site-specific decision making. The areas depicted by this map is approximate, and is not necessarily accurate to surveying or engineering standards. Liberty County assumes no responsibility for the legal accuracy contained herein. ©2020 ESRI. All rights reserved. Esri, the Esri logo, ArcGIS, and the Esri name are trademarks of Esri and are registered in the US Patent and Trademark Office. Other brands and product names are trademarks of their respective owners.

Liberty County PRISYM 2.0

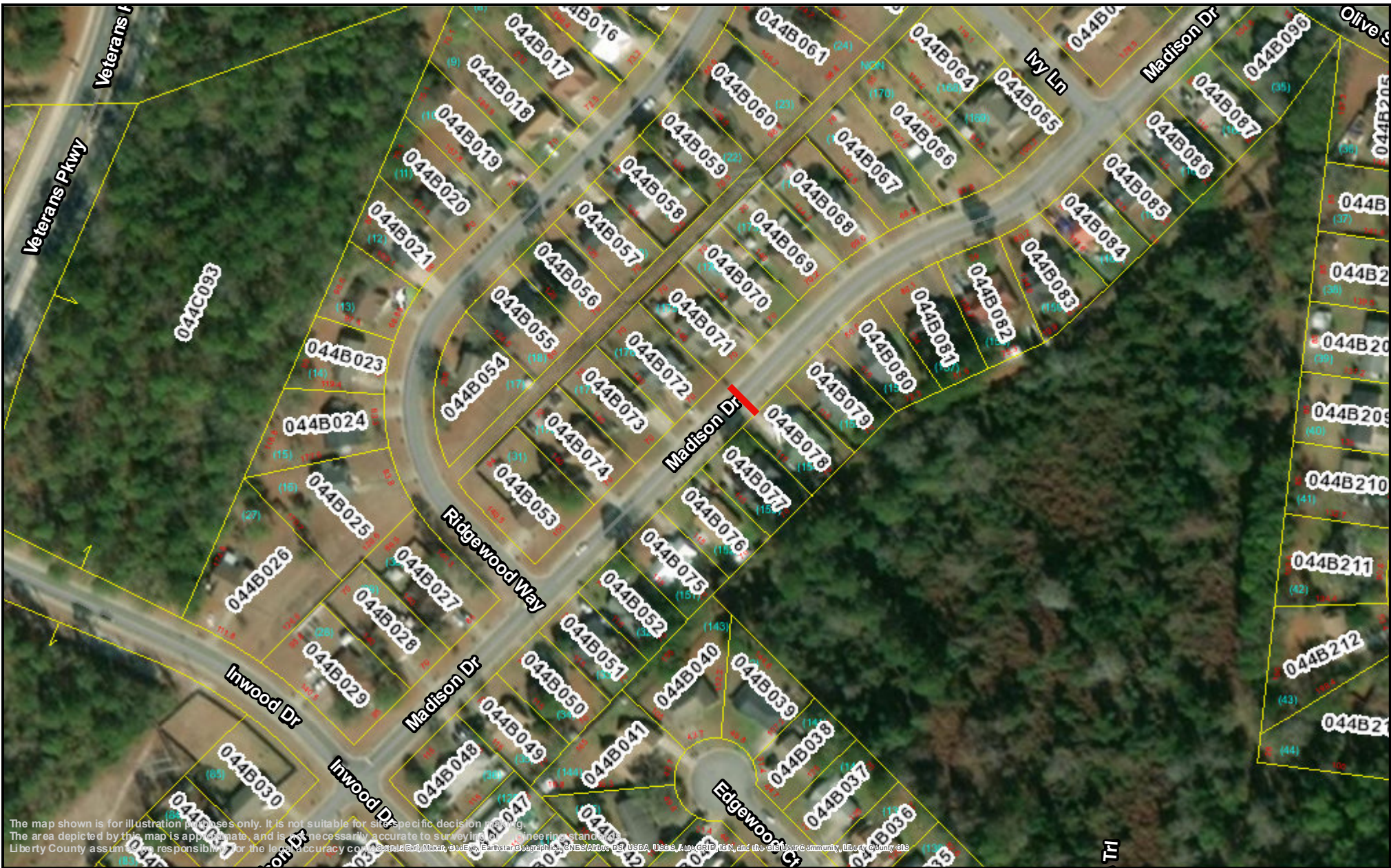
- | | |
|--|---|
| <p>Lines</p> <ul style="list-style-type: none"> Speed table Roads Parcels | <p>Carto Line</p> <ul style="list-style-type: none"> Land Hook |
|--|---|



Liberty County Assessors' Office
 100 Main Street, Suite 1550
 Hinesville, Georgia 31313
 Phone: (912) 876-3568



Printed on 9/30/2020
<http://www.libertycountyga.com>



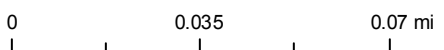
The map shown is for illustration purposes only. It is not suitable for site-specific decision making. The area depicted by this map is approximate, and is not necessarily accurate to surveying or engineering standards. Liberty County assumes no responsibility for the legal accuracy of the map. © 2020 Esri, DeLorme, GeoEye, Earthstar Geographics, CNES/Airbus DS, USDA, AeroGRID, IGN, and the GIS User Community, Liberty County, GA

Liberty County PRISYM 2.0

- | | |
|--------------|-------------------|
| Lines | Carto Line |
| Speed table | Land Hook |
| Roads | |
| Parcels | |



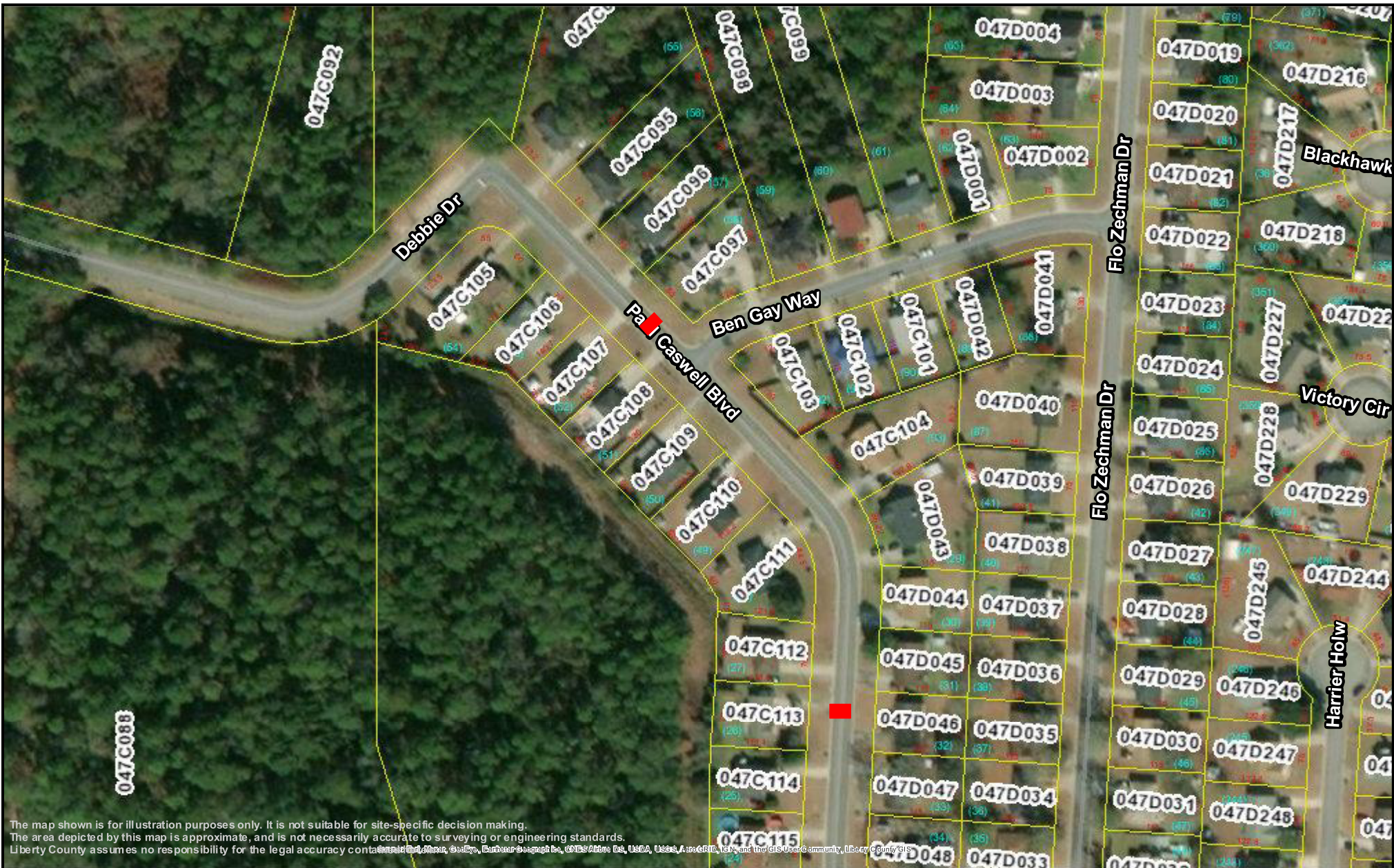
Liberty County
Assessors' Office
100 Main Street, Suite 1550
Hinesville, Georgia 31313
Phone: (912) 876-3568



1 inch = 188 feet






Printed on 9/30/2020
<http://www.libertycountyga.com>



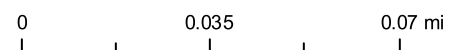
The map shown is for illustration purposes only. It is not suitable for site-specific decision making. The area depicted by this map is approximate, and is not necessarily accurate to surveying or engineering standards. Liberty County assumes no responsibility for the legal accuracy contained herein.

Liberty County PRISYM 2.0

-  Roads
-  Parcels
- Carto Line**
-  Land Hook



Liberty County
Assessors' Office
100 Main Street, Suite 1550
Hinesville, Georgia 31313
Phone: (912) 876-3568



1 inch = 188 feet



Printed on 11/2/2020
<http://www.libertycountyga.com>