



Addendum No. One

Date: October 31, 2022
Project: West Plant Pump Station Screen Addition, SE No. 2021-136
Engineer: Simonton Engineering, LLC.
Greensboro & Hinesville, Georgia

The original plans, specifications, and bid documents are amended to include the following:

Bid Document:

Information for Bid Advertisement & Information to Bidders:

Bid date of November 8, 2022 is now postponed until November 11, 2022.

Proposal:

- Replace sheet existing proposal sheet P-2 with the enclosed P-2

Plans:

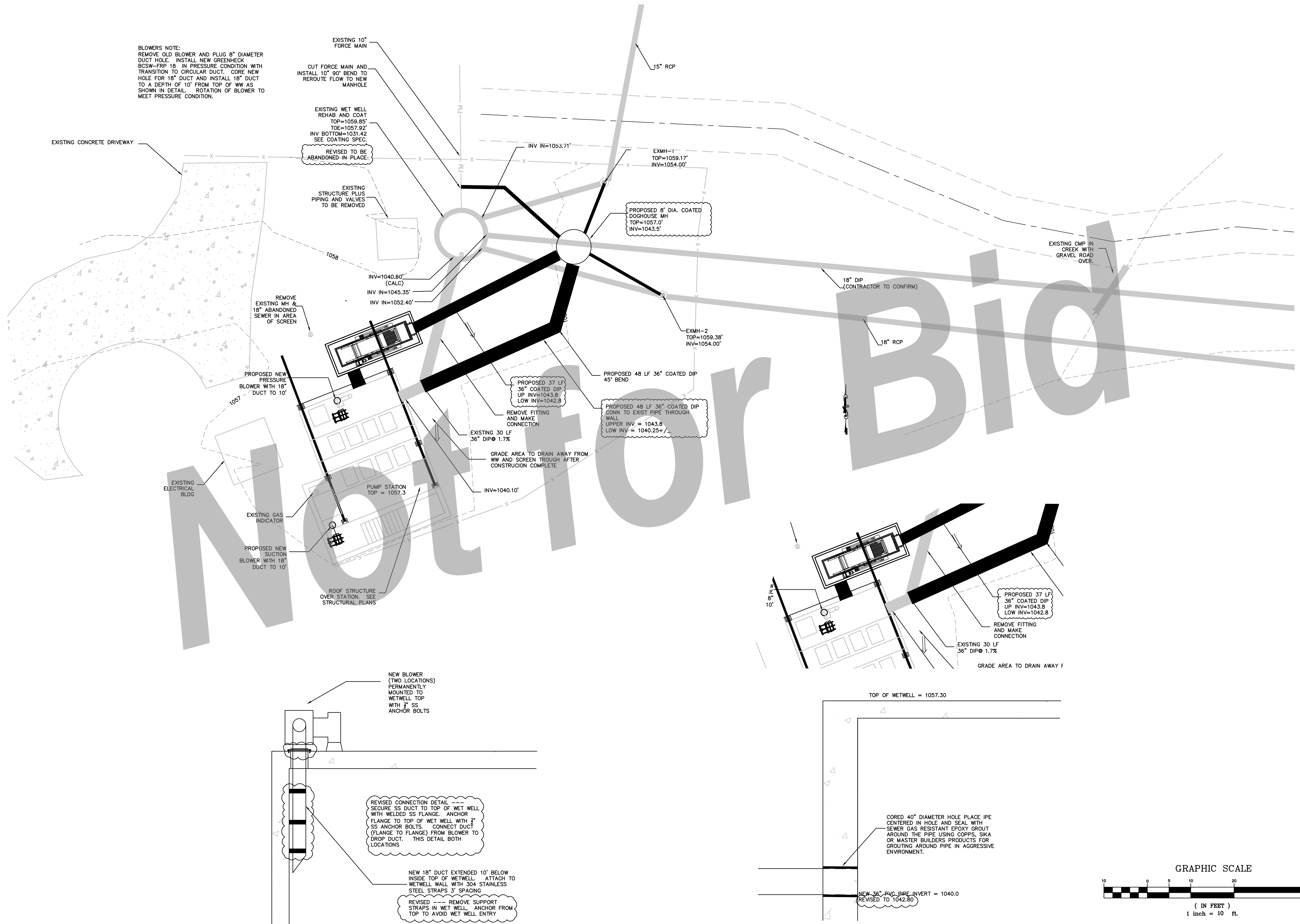
- Replace the original sheet 2.0 and 2.2 with the enclosed sheets 2.0 and 2.2



-END-

**West Plant Influent Screen
for
City of Villa Rica
SE Project No. 2021-136 Addendum #1**

Item No.	Estimated Quantity	Units	Description	Unit Price	Total Price
1	1	LS	Grading		\$
2	1	LS	Demolition		\$
3	150	LF	Silt Fence	\$	\$
4	1	LS	Grassing		\$
5	1	EA	Construction Exit		\$
6			Bypass Complete		
a.	1	EA	Conn to existing force main with new fitting	\$	\$
b.	30	LF	10" PVC Force Main with fittings	\$	\$
c.	2	EA	New Conn. To old Manholes		\$
d.	30	LF	15" PVC Gravity Sewer	\$	\$
e.	1	EA	Coated 8' dia. MH over existng 18" main with connections		\$
f.	1	LS	Bypass Pumping		\$
7	1	LS	Screen Channel w/ Grating		\$
8	1	LS	Connect to Existing WetWell		\$
9	2	EA	Blower Installation Complete	\$	\$
10	1	LS	Replacement of Gas Sensor		\$
11	1	EA	Screen Installation		\$
12	1	LS	Electrical		\$
13	1	LS	Roof Installation & Structure		\$
14	1	LS	Mobilization		\$
			TOTAL		\$ -



BLOWERS NOTE:
 REMOVE OLD BLOWER AND PLUG 8" DIAMETER DUCT HOLE. INSTALL NEW GREENHECK BCSW-FRP 18" IN PRESSURE CONDITION WITH TRANSITION TO CIRCULAR DUCT. CORE NEW HOLE FOR 18" DUCT AND INSTALL 18" DUCT TO A DEPTH OF 10' FROM TOP OF WW AS SHOWN IN DETAIL. ROTATION OF BLOWER TO MEET PRESSURE CONDITION.

EXISTING 10" FORCE MAIN
 CUT FORCE MAIN AND INSTALL 10" 90° BEND TO REROUTE FLOW TO NEW MANHOLE
 EXISTING WET WELL REHAB AND COAT
 TOP=1059.85'
 INV BOTTOM=1031.42
 SEE COATING SPEC.
 REVISED TO BE ABANDONED IN PLACE
 EXISTING STRUCTURE PLUS PIPING AND VALVES TO BE REMOVED

REMOVE EXISTING MH & 18" ABANDONED SEWER IN AREA OF SCREEN

PROPOSED NEW PRESSURE BLOWER WITH 18" DUCT TO 10'

PROPOSED NEW SUCTION BLOWER WITH 18" DUCT TO 10'

PUMP STATION
 TOP = 1057.3

GRADE AREA TO DRAIN AWAY FROM WW AND SCREEN TROUGH AFTER CONSTRUCTION COMPLETE

EXISTING 30 LF 36" DIP@ 1.7%

REMOVE FITTING AND MAKE CONNECTION

PROPOSED 37 LF 36" COATED DIP
 UP INV=1043.8
 LOW INV=1042.8

PROPOSED 48 LF 36" COATED DIP
 GONN TO EXIST PIPE THROUGH WALL
 UPPER INV = 1043.8
 LOW INV = 1040.25+/-

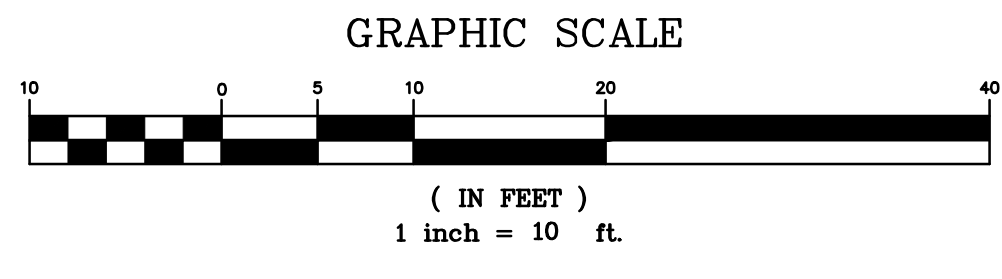
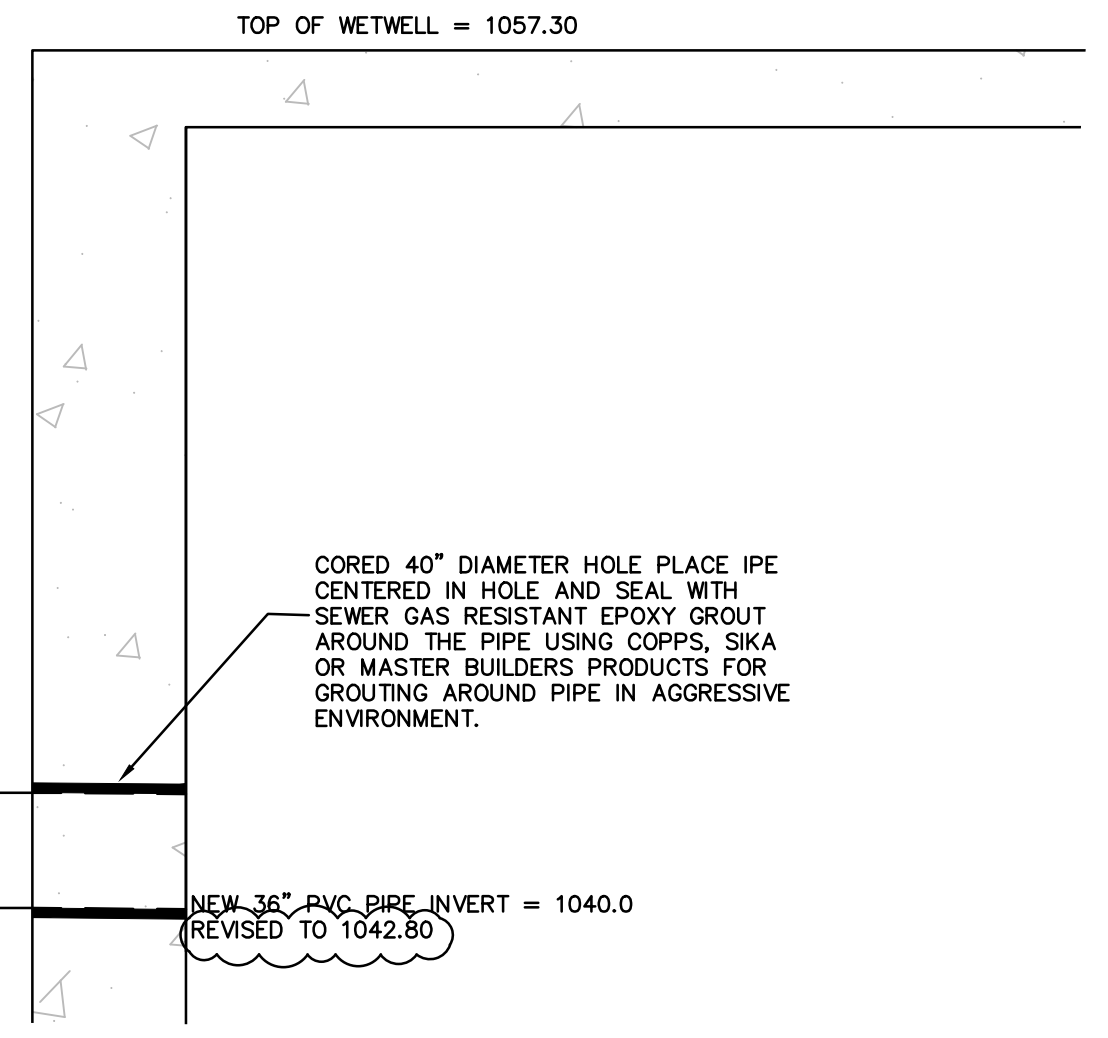
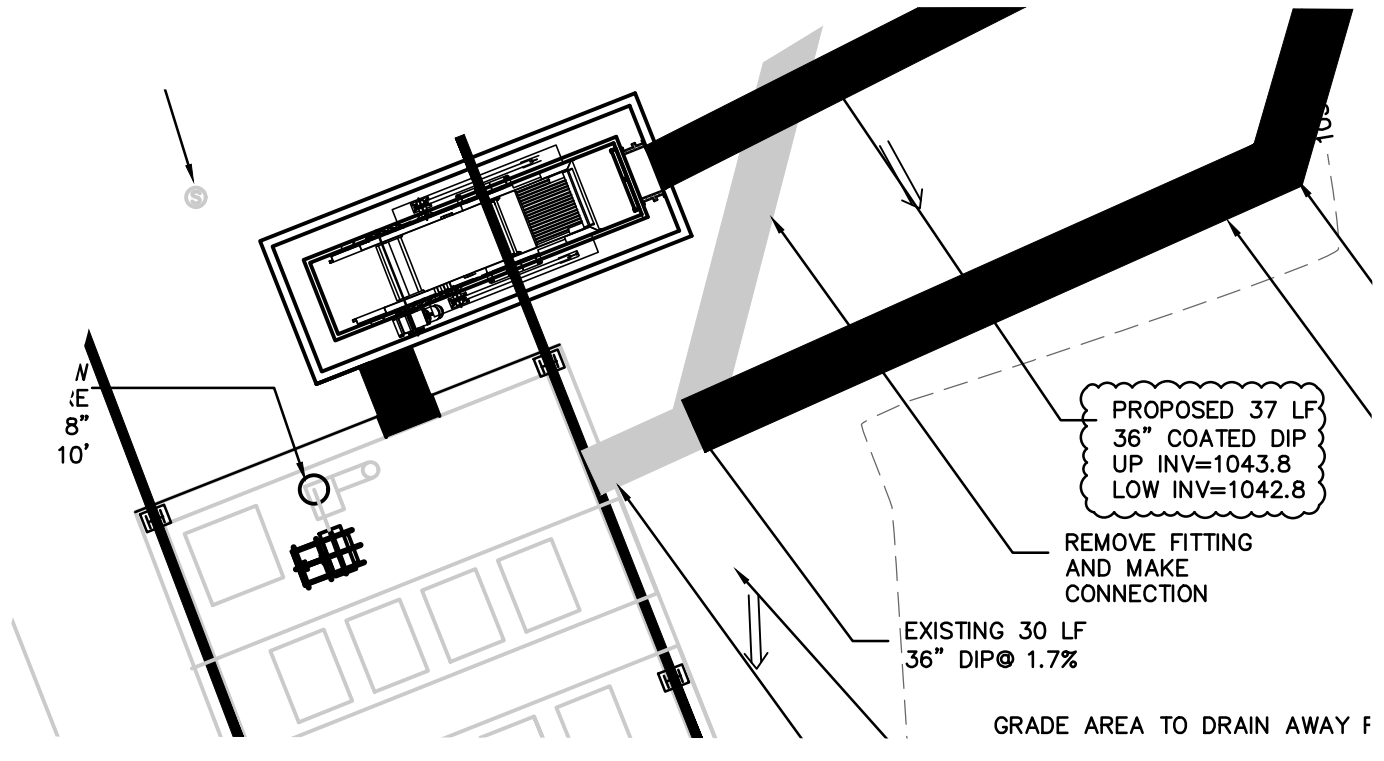
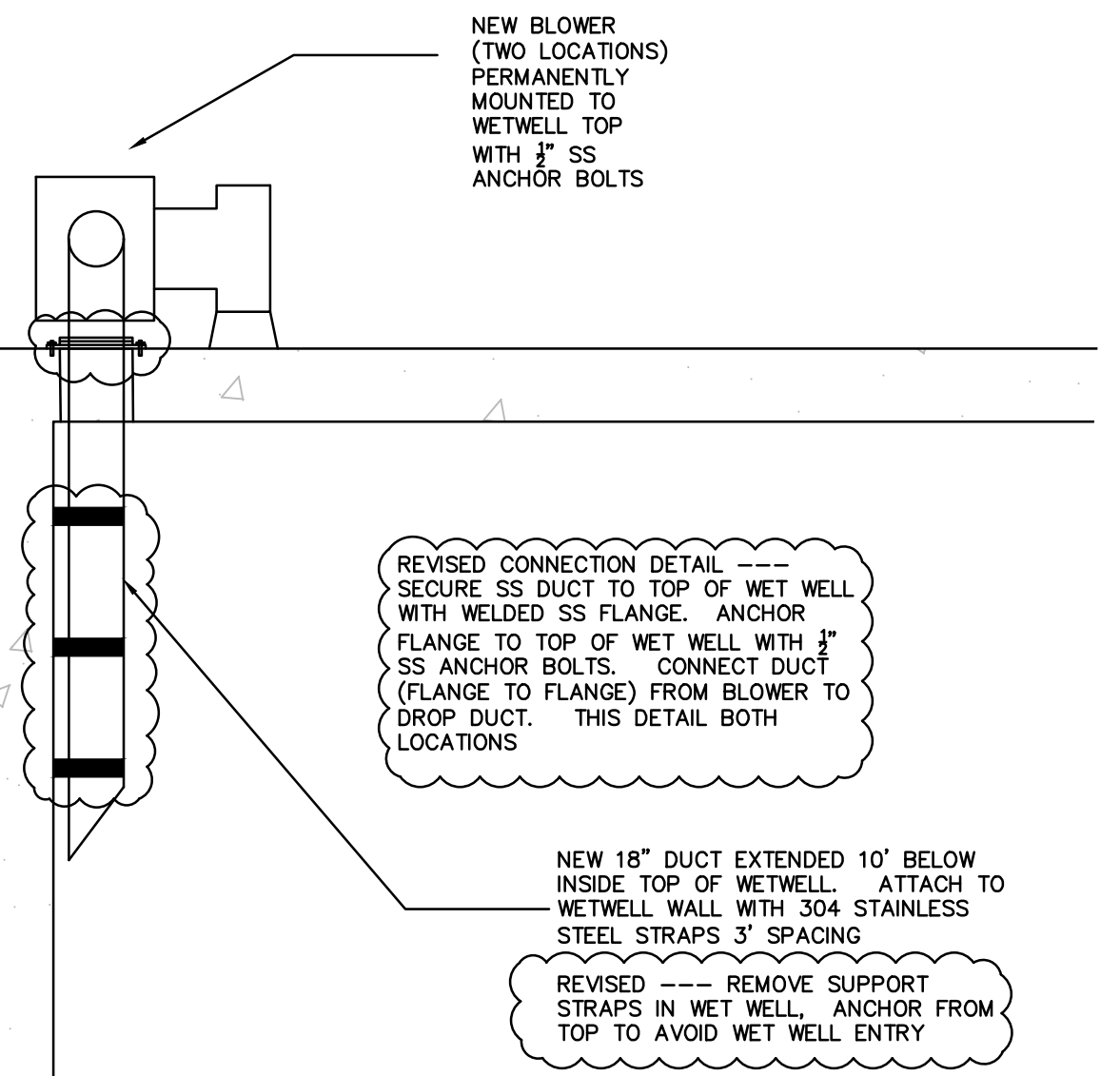
PROPOSED 48 LF 36" COATED DIP
 45° BEND

EXMH-2
 TOP=1059.38'
 INV=1054.00'

EXMH-1
 TOP=1059.17'
 INV=1054.00'

INV IN=1053.71'

INV=1040.80' (CALC)
 INV IN=1045.35'
 INV IN=1052.40'



DRAWING COMPLETED BY:
 Revised 10-30-22 NEW SCREEN LAYOUT & BYPASS

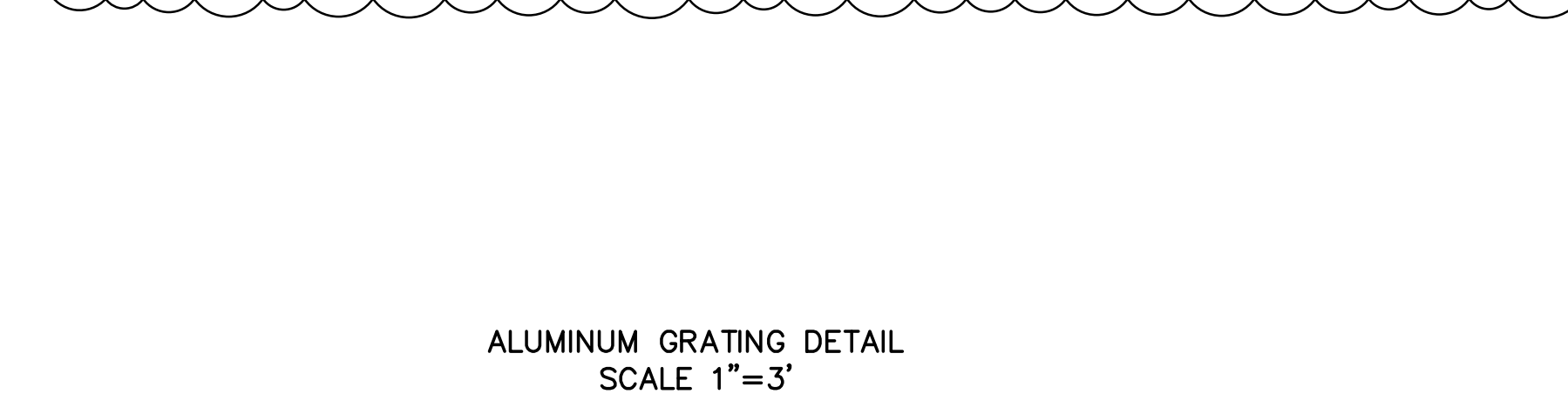
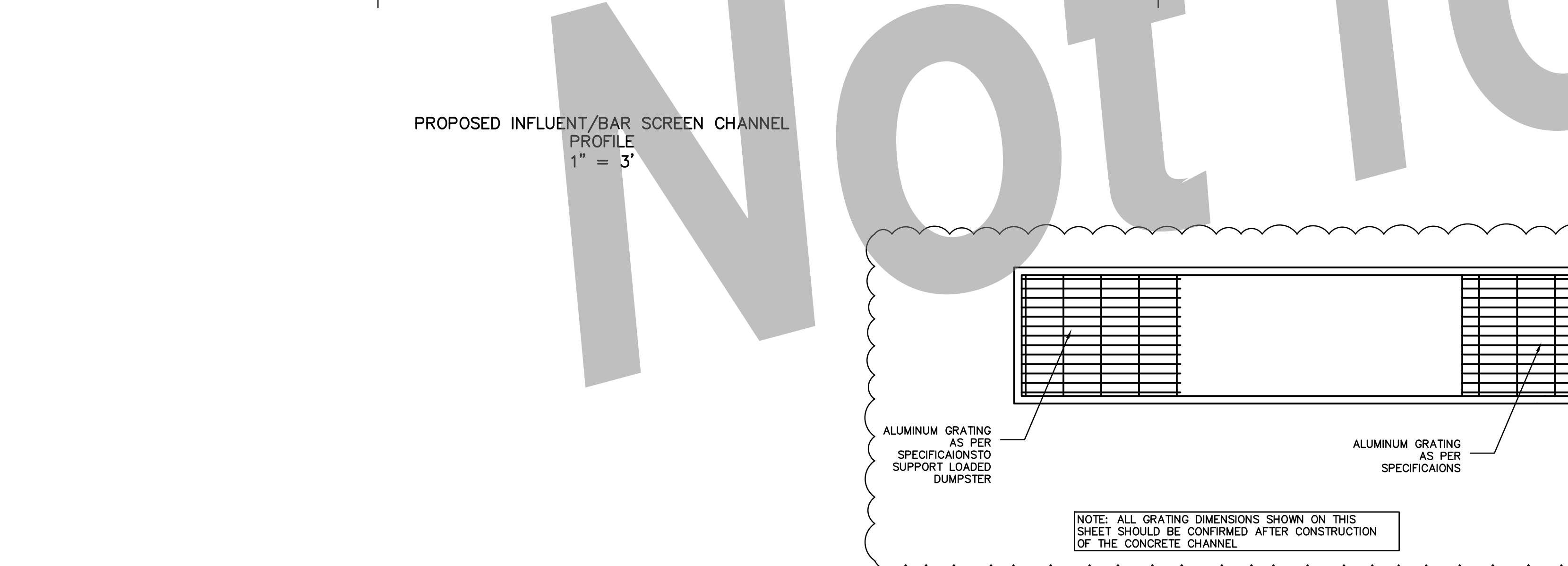
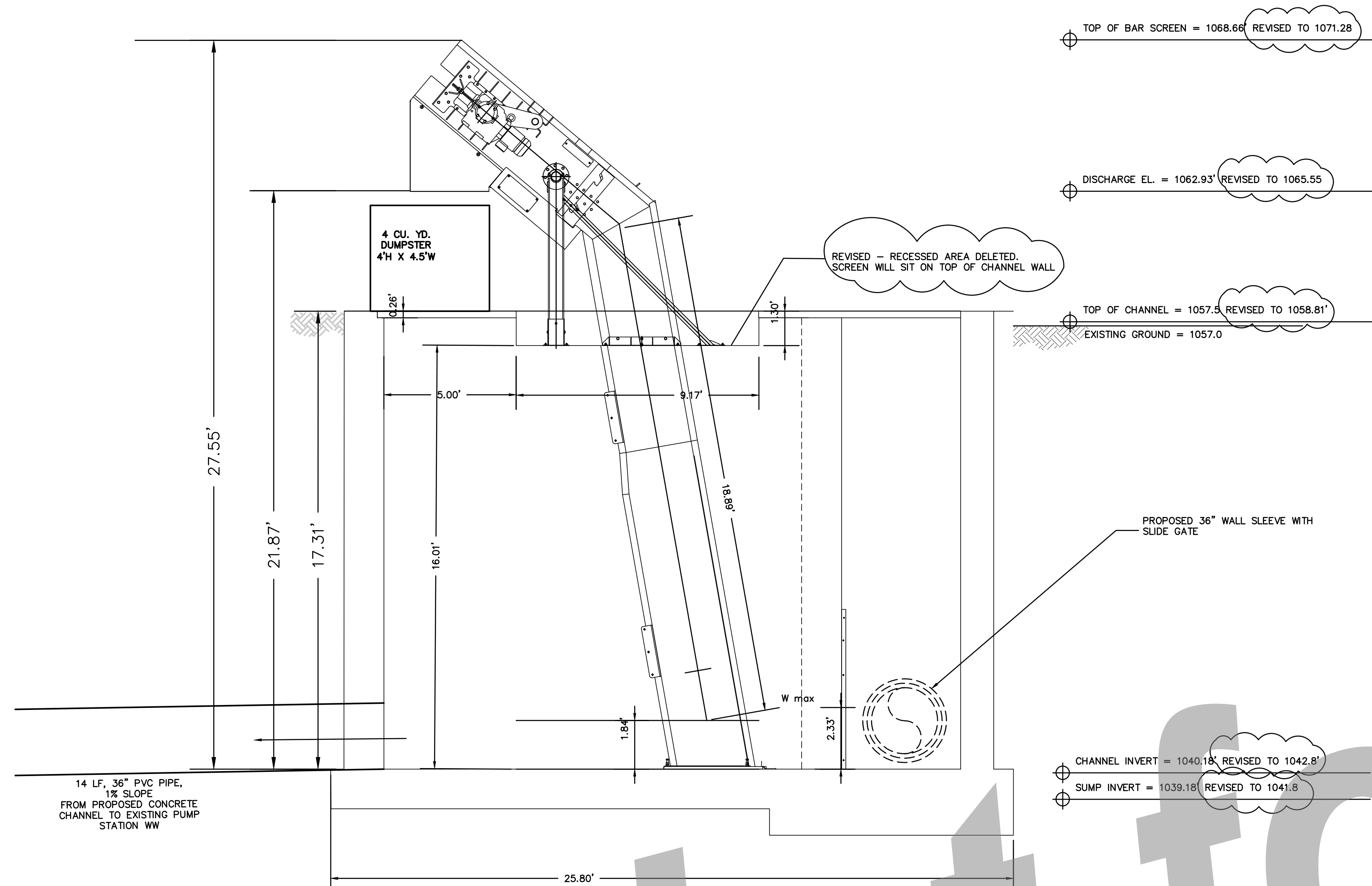
THIS DRAWING IS AN INSTRUMENT OF SERVICE AND REMAINS THE PROPERTY OF SIMONTON & ASSOCIATES, INC. IT IS TO BE USED ONLY FOR THE PROJECT AND SITE SPECIFICALLY IDENTIFIED HEREIN. IT IS NOT TO BE REPRODUCED IN ANY MANNER WITHOUT PERMISSION ON A SIGNED AND SEALED DOCUMENT. THE INFORMATION CONTAINED HEREIN IS INTENDED FOR THE USE OF THE PROFESSIONAL ENGINEER OR ARCHITECT AND IS NOT TO BE USED FOR ANY OTHER PURPOSE. SIMONTON & ASSOCIATES, INC. ASSUMES NO RESPONSIBILITY FOR DATA GENERATED, ALTERED OR STATED FROM THIS DRAWING. IN THE EVENT OF A DISPUTE, HARD COPY SHALL PREVAIL OVER ANY ELECTRONIC MEDIA.
 6904-F.C. SIMONTON & ASSOCIATES, INC.

319 SCREVEN WAY
 HINESVILLE, GA 31313
 TEL: (912) 368-5212
 1050 PARKSIDE COMMONS
 GREENSBORO, GA 30642
 TEL: (706) 454-0870

SIMONTON
ENGINEERING

West Plant Influent Rehab
 for
 The City of Villa Rica
 Carroll County, Georgia

Sewer Plan & Profile
 DATE: SEPTEMBER 29, 2022
 FILE NO: 2019-59PRJ
 SHEET: C 2.0



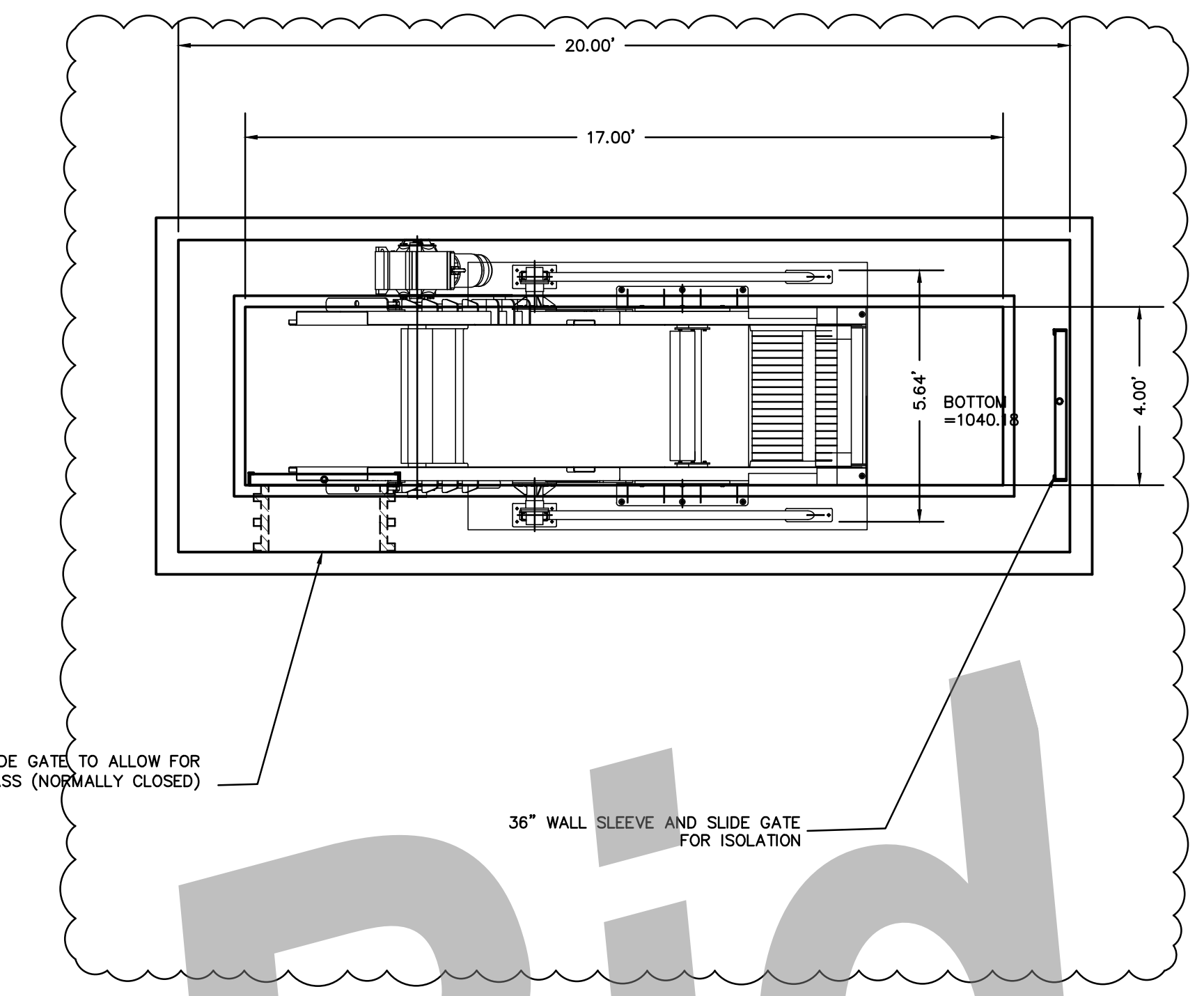
ALUMINUM GRATING DETAIL
SCALE 1"=3'

TOP OF BAR SCREEN = 1068.66 REVISD TO 1071.28
 DISCHARGE EL. = 1062.93 REVISD TO 1065.55
 TOP OF CHANNEL = 1057.5 REVISD TO 1058.81
 EXISTING GROUND = 1057.0

CHANNEL INVERT = 1040.18 REVISD TO 1042.8
 SUMP INVERT = 1039.18 REVISD TO 1041.8

REVISED - RECESSED AREA DELETED.
SCREEN WILL SIT ON TOP OF CHANNEL WALL

PROPOSED 36" WALL SLEEVE WITH SLIDE GATE



Not for Bid

DRAWING COMPLETED BY:
Revised 10-30-22 NEW SCREEN LAYOUT & BYPASS

THIS DRAWING IS AN INSTRUMENT OF SERVICE AND REMAINS THE PROPERTY OF SIMONTON & ASSOCIATES, INC. NO PART OF THIS DRAWING IS TO BE REPRODUCED OR TRANSMITTED IN ANY MANNER WITHOUT PERMISSION ON A SIGNED AND SEALED DOCUMENT. THE INFORMATION CONTAINED HEREIN IS INTENDED FOR THE USE OF THE CLIENT AND IS NOT TO BE USED FOR ANY OTHER PROJECT. SIMONTON & ASSOCIATES, INC. ASSUMES NO RESPONSIBILITY FOR DATA GENERATED, ALTERED OR STAIRED FROM THIS DRAWING. IN THE EVENT OF A DISPUTE, HARD COPY SHALL PREVAIL OVER ANY ELECTRONIC MEDIA.
© 2022 SIMONTON & ASSOCIATES, INC.

SIMONTON ENGINEERING

319 SCREVENWAY
HINESVILLE, GA 31313
TEL: (912) 368-5212

1050 PARKSIDE COMMONS
GREENSBORO, GA 30642
TEL: (706) 454-0870

West Plant Influent Rehab
for
The City of Villa Rica
Carroll County, Georgia

Screen Detail
DATE: SEPTEMBER 29, 2022
FILE NO: 2019-59PRJ
SHEET: C 2.2